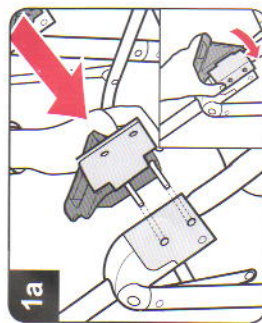


1 Attaching your child seat for use as a travel system

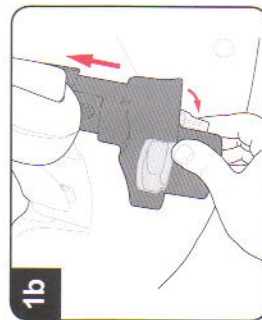
(this vehicle is intended for children from birth and up to 13kgs)



HANDY HINT – You may find it easier to apply the brake when attaching or removing your child seat. Refer to the buggy user guide for instruction on operating the brake.

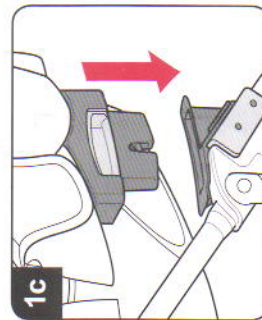
Ensure that the left hand and right hand sockets are used on the correct side of the chassis.

Attach the socket by placing the pins into the holes on the chassis (dia 1a), push into place and lock by closing the catch. Repeat this process for both sockets. To remove the socket reverse the above instructions.



Ensure that the left hand and right hand adaptors are used on the correct side of the child seat.

To fit the adaptor to the child seat squeeze the lever and insert into the space below the handle (dia 1b). Make sure it is fully fitted and release the lever to lock into place. Repeat this process for both adaptors.

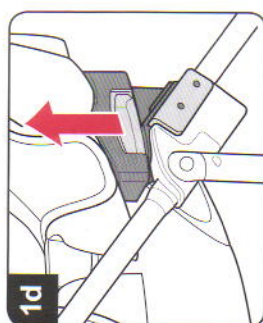


Lower the child seat onto the chassis making sure that the adaptor on either side drops into both the sockets on each side of the chassis (dia 1c). Push down firmly. Once the child seat is engaged you will hear a click.

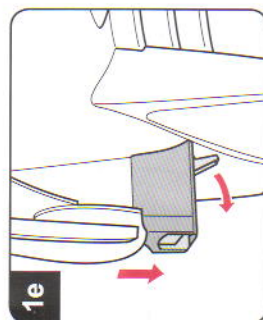
Move the handle to the rocking position. Please refer to the user guide for the child seat.

WARNING – Check that the child seat attachment devices are correctly engaged before use.

IMPORTANT – Ensure your child is harnessed at all times.



To remove the child seat move the handle to the carrying position. Lift the lever on the adaptors and lift the child seat out of the sockets (dia 1d).



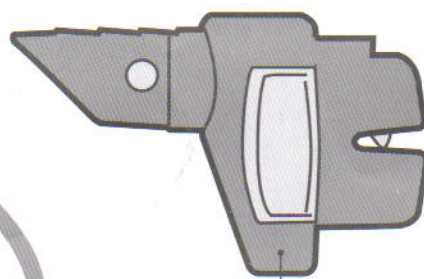
IMPORTANT – It may be necessary to remove the adaptors from the child seat when installing it in your vehicle.

If the adaptors are in contact with the vehicle seat cushion remove them.

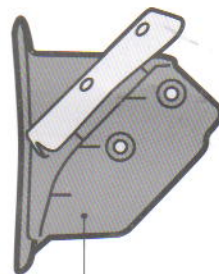
To remove the adaptor from the child seat, pull the lever on the adaptor away from the child seat while pulling down (dia 1e). Repeat the process for both adaptors.

The child seat is compatible with the ISOFIX base (purchased separately). See www.britax.co.uk for further information.

Only use a P-Type child seat on this buggy when fitted with a Vigour P-Type socket



Vigour P-Type adaptor



Vigour P-Type socket

vigour

UK User Guide



IMPORTANT!

Read these instructions carefully before use and keep them for further reference. Your child's safety may be affected if you do not follow these instructions.

Please read this User Guide carefully BEFORE trying to use your buggy

Looking after your buggy

The buggy and its cover have been carefully designed, manufactured and tested to high safety standards.

Regularly inspect and maintain your buggy to ensure freedom of movement of the locking devices and security of components. To prolong the life of your buggy, keep it clean and do not leave it in direct sunlight for extended periods of time.

Helpful hints

Regularly clean and inspect your buggy. To ensure trouble free operation lubricate moving parts and joints with a silicon based spray. If the wheels squeak use a silicon based spray or light lubricating oil ensuring it penetrates the wheel and axle assembly.

When using the buggy on the beach, clean it completely afterwards to remove all the sand and salt from the mechanisms and wheel assemblies.

Under certain climate conditions the covers and trims may be affected by mould and mildew. To help prevent this occurring, do not fold or store this buggy if it is wet or damp. Always store in a well ventilated area.

Cleaning the cover

The hood, seat covers and trims may be cleaned using warm water with household soap or mild detergent. Allow it to dry fully, away from direct sunlight.

DO NOT dry clean or use bleach or any other aggressive cleaning agents.

To maintain the safety of your buggy, seek prompt repairs for bent, torn or broken parts. Use only those parts and accessories approved by Britax. Replacement parts and accessories are available from your Britax

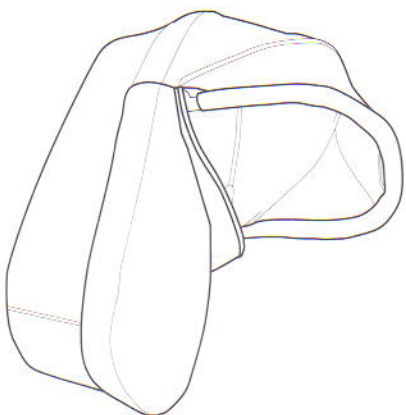
stockist or contact Britax Customer Service Department on 01264 386034. This product is not intended for commercial use.

Guarantee

All Britax products are carefully designed, manufactured and tested. However, should this product prove faulty within six months of purchase due to a materials or manufacturing fault please return it to the original place of purchase. We will then, at our discretion, either repair it free of charge or replace it with the same or a similar product.

For guarantee purposes proof of purchase will be required. We recommend that you retain your receipt and attach it to this user guide. They should be kept in a safe place. Britax does not accept liability for damage arising from abuse, misuse or negligence. This guarantee is not transferable and therefore does not apply to second-hand products.

Your statutory rights are not affected by this guarantee.



Carry cot (P Type) also available.



WARNING – A CHILD'S SAFETY IS YOUR RESPONSIBILITY

WARNING – Ensure that all locking devices are engaged before use.

WARNING – Check that the seat unit attachment devices are correctly engaged before use.

WARNING – Children must be harnessed at all times.

WARNING – Overloading, incorrect folding and the use of non-approved accessories may damage or break this buggy and make it unstable for use.

WARNING – Regularly inspect the buggy to ensure all parts are in full working order.

WARNING – Any load attached to the handle affects the stability of the pushchair.

WARNING – This seat is not suitable for running or skating.

WARNING – It may be dangerous to leave your child unattended.

DO NOT leave or place your child in a position where they are exposed to the sun. The canopy or hood on this product will not give your child total protection from the harmful rays of the sun.

DO NOT allow the buggy to remain wet for prolonged periods of time. If it does get wet, allow to dry unfolded at room temperature.

DO NOT place more than 4kg in the basket, or 1kg in the canopy pocket (if supplied).

DO NOT allow children to play with or adjust the buggy.

DO NOT carry more than one child on this buggy.

DO NOT use accessories that are not approved by Britax Excelsior Limited.

DO NOT use a PVC rain cover indoors, in a hot atmosphere or near a direct heat source - your child might overheat.

DO read the cleaning instructions for the cover.

DO ensure children are clear of moving parts and locking devices while making adjustments.

DO periodically check that any screws, nuts, bolts and other fastenings are fully tightened.

DO store the buggy in a safe place when not in use. Avoid placing heavy objects on top of it and do not store near direct heat sources, e.g. radiators, open bar fires or in direct sun light as the cover may fade.

ALWAYS remove the child from the buggy before going up or down stairs or escalators. This buggy is designed and manufactured to comply to EN1888: 2005.

Britax Excelsior Limited

1 Churchill Way West
Andover
Hampshire SP10 3UW
United Kingdom

A Britax Childcare company

Customer Service Helpline: 01264 386034
Email: helpline@uk.britaxeurope.com
Switchboard: +44 (0) 1264 333343
Fax: +44 (0) 1264 334146
www.britax.eu